

THE LONDON RESORT

The London Resort Development Consent Order

BC080001

Environmental Statement Volume 2: Appendices

Figure 9.10 – Pedestrian and Cycle Provision

Document reference: 6.3.9.10

Revision: 00

December 2020

Planning Act 2008

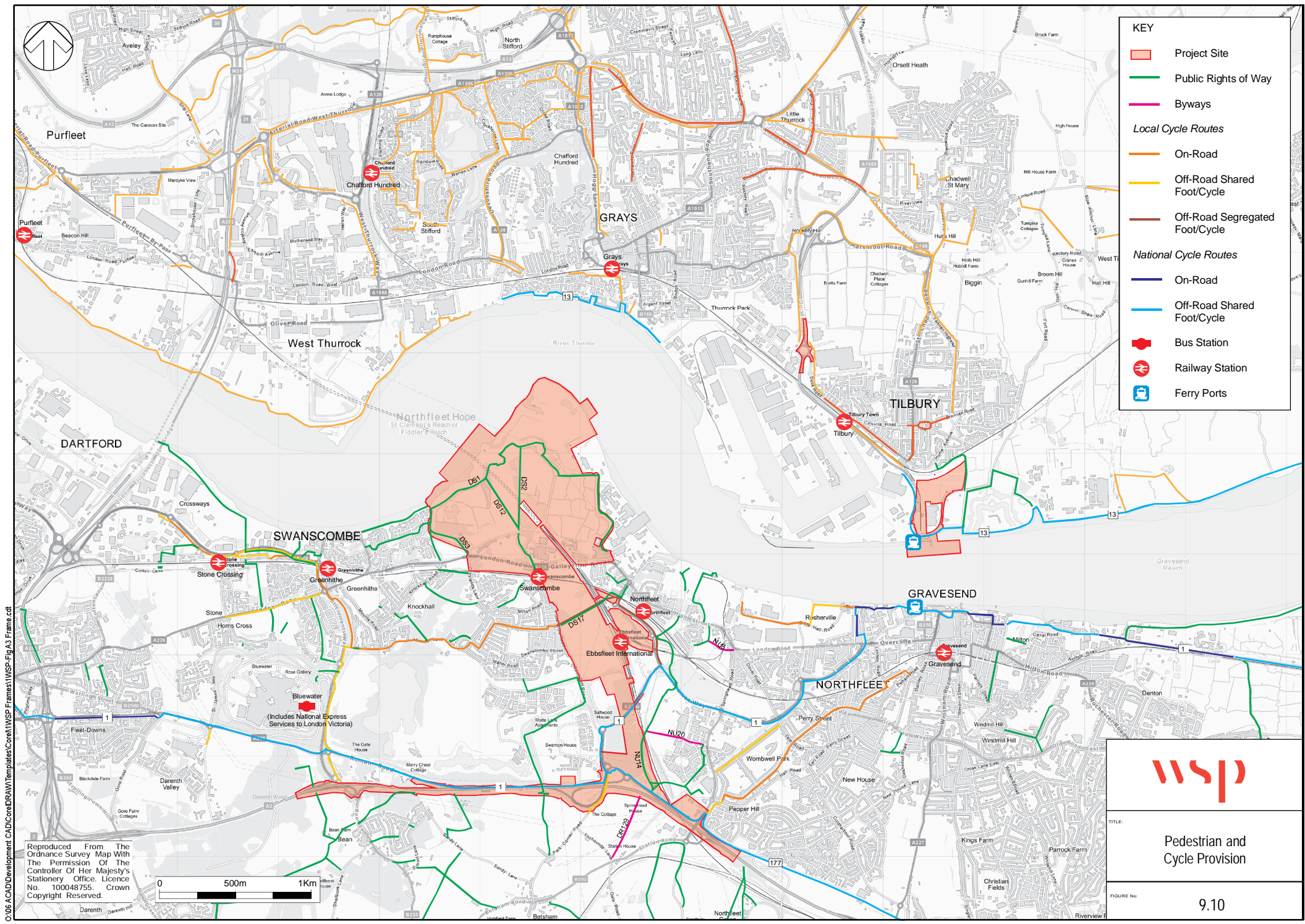
The Infrastructure Planning (Applications: Prescribed Forms and Procedure) Regulations 2009

Regulation 5(2)(a)

The Infrastructure Planning (Environmental Impact Assessment) Regulations 2017

Regulation 12(1)

[This page is intentionally left blank]



KEY

- Project Site
- Public Rights of Way
- Byways
- Local Cycle Routes*
- On-Road
- Off-Road Shared Foot/Cycle
- Off-Road Segregated Foot/Cycle
- National Cycle Routes*
- On-Road
- Off-Road Shared Foot/Cycle
- Bus Station
- Railway Station
- Ferry Ports

wsp

TITLE:
**Pedestrian and
Cycle Provision**

FIGURE No:
9.10

C:\06 ACAD\Development CAD\CareDRAW\Templates\Conat\WSP-Frames\WSP-Fig-A3-Frames.cdl

Reproduced From The
Ordnance Survey Map With
The Permission Of Her Majesty's
Stationery Office. Licence
No. 100048755. Crown
Copyright Reserved.

